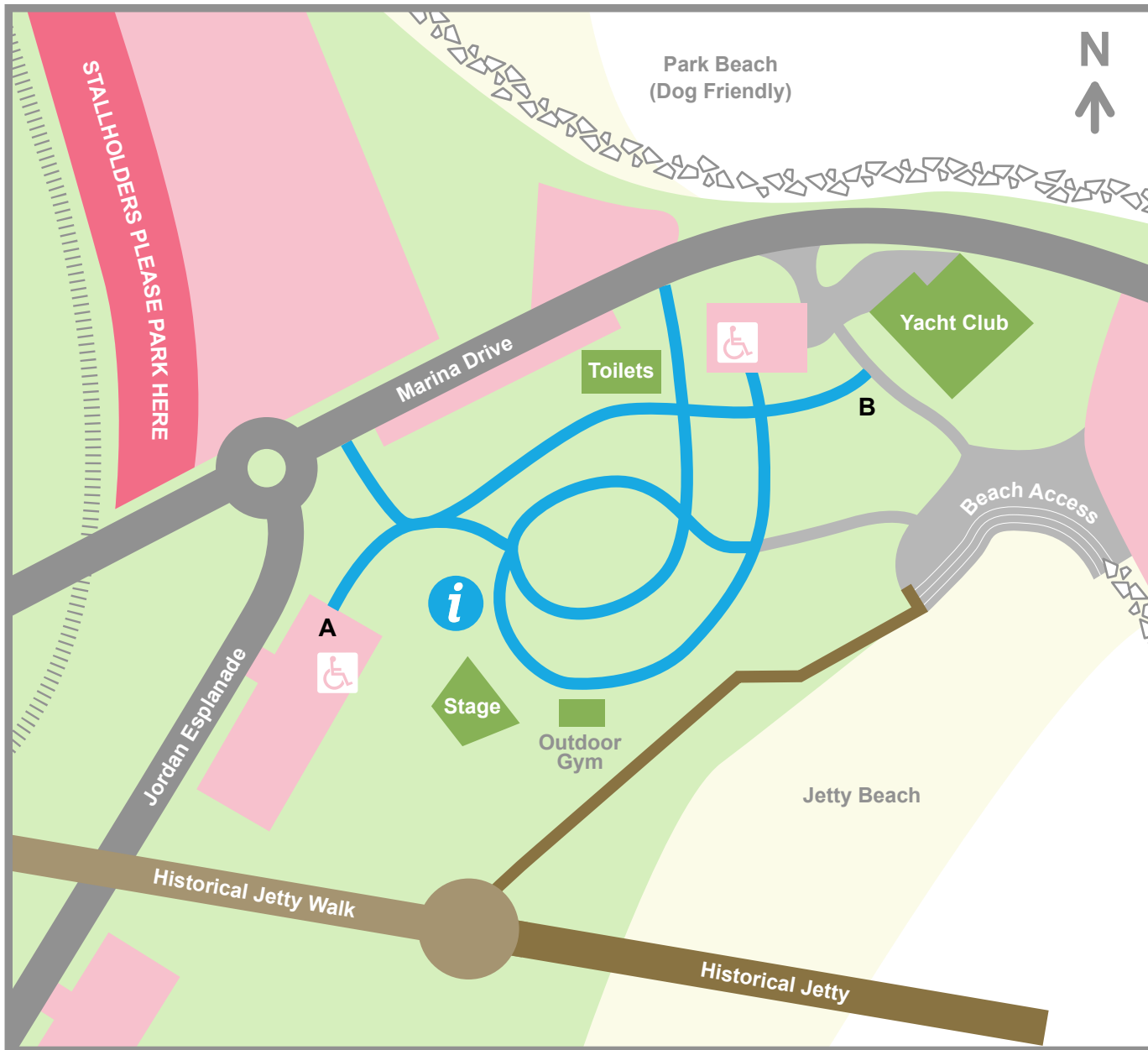













# HARBOURSIDE MARKETS SITE MAP



-  MARKET PATHS
-  HISTORICAL JETTY & BOARDWALK
-  ROCK WALL
-  RAILWAY
-  PUBLIC PATHS
-  ROAD
-  LANDMARKS & AMMENITIES
-  CUSTOMER PARKING
-  STALLHOLDER PARKING  
**\* IMPORTANT PLEASE NOTE!**
  - stallholders unload and move your car here by 8am.
  - this ensures the max amount of close car spaces are available for your market customers.
  - Stallholders can park in customer zones from 2pm for stall pack up.
  - trolleys are available from the information tent to assist moving goods to your parked cars.



PET FRIENDLY ON LEAD



DISABLED ACCESS & AMMENITIES



MARKET INFORMATION STALL